



HLA-DQB1/2 Polyclonal Antibody

Catalog No	YP-Ab-14040
Isotype	IgG
Reactivity	Human
Applications	WB;IHC;IF;ELISA
Gene Name	HLA-DQB1/HLA-DQB2
Protein Name	HLA class II histocompatibility antigen DQ beta 1 chain/HLA class II histocompatibility antigen DQ beta 2 chain
Immunogen	The antiserum was produced against synthesized peptide derived from the Internal region of human HLA-DQB1/HLA-DQB2. AA range:131-180
Specificity	HLA-DQB1/2 Polyclonal Antibody detects endogenous levels of HLA-DQB1/2 protein.
Formulation	Liquid in PBS containing 50% glycerol, 0.5% BSA and 0.02% sodium azide.
Source	Polyclonal, Rabbit,IgG
Purification	The antibody was affinity-purified from rabbit antiserum by affinity-chromatography using epitope-specific immunogen.
Dilution	WB: 1/500 - 1/2000. IHC-p: 1/100-1/300. ELISA: 1/20000.. IF 1:50-200
Concentration	1 mg/ml
Purity	≥90%
Storage Stability	-20°C/1 year
Synonyms	HLA-DQB1; HLA-DQB; HLA class II histocompatibility antigen, DQ beta 1 chain; MHC class II antigen DQB1; HLA-DQB2; HLA-DXB; HLA class II histocompatibility antigen, DQ beta 2 chainHLA class II histocompatibility antigen, DX beta chain; MHC class II antigen DQB2
Observed Band	30kD
Cell Pathway	Cell membrane; Single-pass type I membrane protein. Endoplasmic reticulum membrane; Single-pass type I membrane protein. Golgi apparatus, trans-Golgi network membrane; Single-pass type I membrane protein. Endosome membrane; Single-pass type I membrane protein. Lysosome membrane; Single-pass type I membrane protein. The MHC class II complex transits through a number of intracellular compartments in the endocytic pathway until it reaches the cell membrane for antigen presentation.
Tissue Specificity	B-cell,Blood,Colon,Peripheral blood,Peripheral bloo
Function	caution:PubMed:6954511 have called the protein an HLA-DR antigen-like beta-chain.,online information:The Singapore human mutation and polymorphism database,similarity:Belongs to the MHC class II family.,similarity:Contains 1 Ig-like C1-type (immunoglobulin-like) domain.,

**Background**

major histocompatibility complex, class II, DQ beta 1(HLA-DQB1) Homo sapiens HLA-DQB1 belongs to the HLA class II beta chain paralogs. This class II molecule is a heterodimer consisting of an alpha (DQA) and a beta chain (DQB), both anchored in the membrane. It plays a central role in the immune system by presenting peptides derived from extracellular proteins. Class II molecules are expressed in antigen presenting cells (APC: B lymphocytes, dendritic cells, macrophages). The beta chain is approximately 26-28 kDa and it contains six exons. Exon 1 encodes the leader peptide, exons 2 and 3 encode the two extracellular domains, exon 4 encodes the transmembrane domain and exon 5 encodes the cytoplasmic tail. Within the DQ molecule both the alpha chain and the beta chain contain the polymorphisms specifying the peptide binding specificities, resulting in up to four different molecules. Typing for these polymorphisms is routinely done for bone marrow

matters needing attention

Avoid repeated freezing and thawing!

Usage suggestions

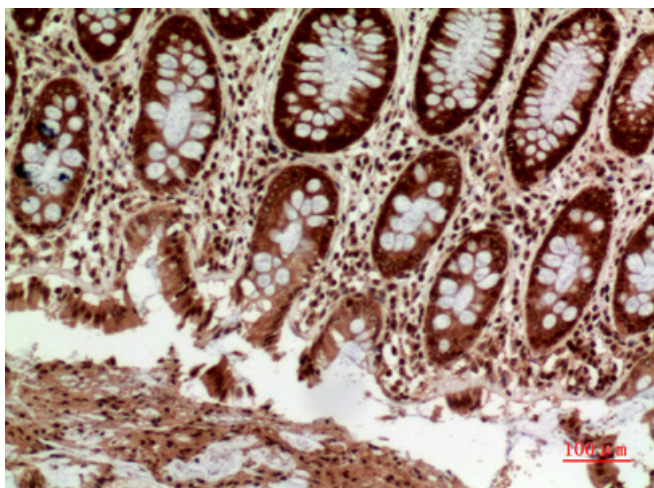
This product can be used in immunological reaction related experiments. For more information, please consult technical personnel.



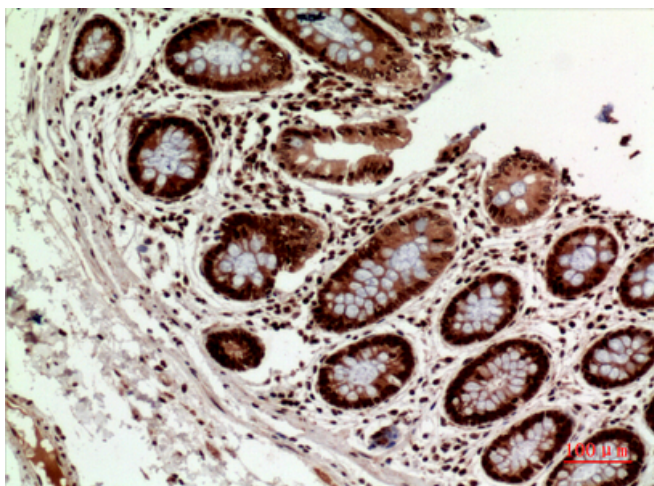
Products Images



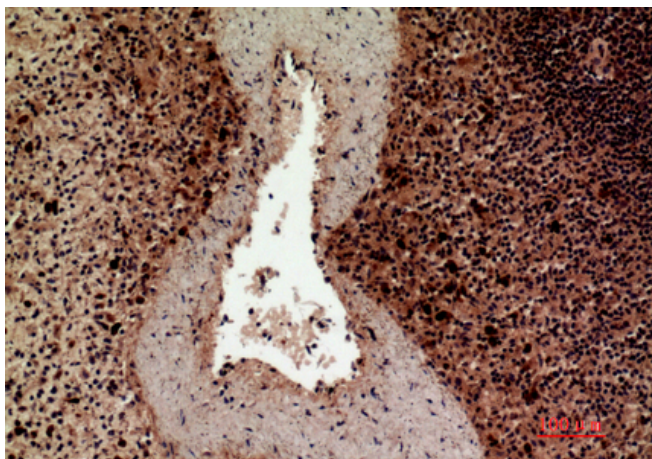
Western Blot analysis of PC12 cells using HLA-DQB1/2 Polyclonal Antibody. Secondary antibody(catalog#:RS0002) was diluted at 1:20000



Immunohistochemical analysis of paraffin-embedded human-colon, antibody was diluted at 1:100



Immunohistochemical analysis of paraffin-embedded human-colon, antibody was diluted at 1:100



Immunohistochemical analysis of paraffin-embedded human-spleen, antibody was diluted at 1:100